

# Risk Perception of COVID-19 and Consumption Changes in California

Dilan Su Alpergin

August 31, 2022

## **Abstract**

This paper studies the role of risk perception in explaining consumption expenditure changes during the COVID-19 pandemic and the mechanism behind such a relationship. Under the framework of the two-stage instrumental variable (IV) analysis, I identify a causal relationship between consumer risk perception and spending by focusing on the period between April 1, 2020 to January 2, 2021, before the vaccine was publicly available in California. Specifically, I use the weekly growth rate of COVID-19 cases in New York as a source of exogenous variation in consumer risk perception in California. Two datasets are used for this purpose: (i) The University of Southern California (USC) Center for Economic and Social Research's Understanding Coronavirus in America Survey and (ii) The Opportunity Insights Economic Tracker. The results show that the growth rate of confirmed cases in New York is a strong instrument that has a positive and statistically significant effect on California residents' risk perception of death, infection, money loss, and job loss due to COVID-19. Moreover, I find a statistically significant causal relationship between risk perception and consumption expenditures. This effect is negative for major consumption categories, such as accommodation and food services, health care and social assistance, and sporting goods and hobbies. On the other hand, the effect is positive for grocery and food stores and arts, entertainment, and recreation.

# 1 Introduction

The World Health Organization declared the rapid spread of COVID-19 a global public health emergency in March 2020. According to International Monetary Fund (IMF), coronavirus infection has not only become a public health crisis but has also caused the worst recession globally since the Great Depression. According to the Bureau of Economic Analysis (2020), GDP decreased by \$2 trillion, at an annual rate of 31.4 percent, from the first quarter of 2020 to the second quarter of 2020. The primary reason of the GDP drop was a reduction in personal consumption expenditures, which decreased by \$1.45 trillion. On the other hand, personal saving rate rocketed to 33.8 percent in April 2020, more than doubling its 2019 value.

The literature suggests four possible channels to explain why households increased savings and reduced consumption expenditures during the COVID-19 crisis. First, increased uncertainty about future income and employment prospects reduced consumption incentives and generated so-called precautionary saving (Lelan, 1968; Kimball, 1990), as was also the case during the Great Recession (Mody, 2012). Second, legal shut-down orders gave rise to practice of forced savings (Dossche et al., 2020). Third, spending decreased due to loss of income. Finally, households reduced their consumption expenditures due to the risk perception of COVID-19, i.e., individuals' subjective assessment of risks associated with the coronavirus. People's risk perception affects how they evaluate external threats, make decisions, and act. When individuals perceive an external threat, they take various actions, including conservative ones, to deal with risk and uncertainty. Therefore, risk perception and risk-related behaviors may amplify the economic impact of disasters far beyond their direct consequences (Burns and Slovic, 2012).

Studies concerning the income component of the COVID-19 crisis argue that households who lost their jobs during the pandemic, mostly lower-income individuals, were more than compensated by the Coronavirus Aid, Relief, and Economic Security (CARES) Act<sup>1</sup> payments

---

<sup>1</sup>The Coronavirus Aid, Relief, and Economic Security (CARES) Act was a \$2 trillion emergency assistance package approved in 2020 in response to COVID-19. The package also included expanded unemployment insurance (UI) benefits, such as the Pandemic Unemployment Assistance (PUA) and the Pandemic Emergency Unemployment Compensation (PEUC).

(Chetty et al., 2020; Farrell et al., 2020). They also argue that the spending of these households increased after receiving these supplemental payments (Baker et al. 2020; Farrell et al., 2020). In addition, Baker et al. (2020) show that the propensity to consume was significantly lower among individuals expecting a job loss than those who considered losing a job unlikely, consistent with the precautionary saving channel.

The subjective expected utility (SEU) model of Savage (1951) is one of the most widely used economic models for representing preferences under uncertainty. Savage assumes that choices arise from maximizing an expected utility calculated by an individual's perceived or subjective assessments of risk. As in the subjective expected utility model of Savage, this paper studies agents' subjective beliefs about the states of the world and their updated beliefs when new information arrives. According to Savage, deviations from the subjective expected utility (SEU) framework indicate irrationality. Nevertheless, his theory is based on ideal economic assumptions. For example, it breaks when there is a new event that individuals do not have enough information about, such as a new virus where data and technology are scarce. However, the process of choice is a complex and multidetermined phenomenon in reality because individuals are confronted with a diverse array of information. People change their beliefs in the face of new information, and these changes in beliefs result in alterations in their choices, such as consumption and saving. Therefore, more empirical analyses of how individuals make choices when faced with new threats are needed to improve public policies.

This paper shows how risk perception of COVID-19 changed consumption expenditures in California from April 1, 2020 to January 2, 2021, the period before the vaccine was publicly available. By merging two datasets: (i) The University of Southern California (USC) Center for Economic and Social Research's Understanding Coronavirus in America Survey, and (ii) The Opportunity Insights (O.I.) Economic Tracker, I obtain information on California residents' subjective assessment of the level of risk associated with COVID-19 and changes in personal consumption expenditures in California. I analyze the relationship by using an instrumental variable (IV) approach. Specifically, I use the weekly growth rate of COVID-19 cases in New York as a source of exogenous variation in consumer risk perception in California. I show that California residents' perceived risk of death, infection, running out of money, and job loss due to COVID-19 increases when the weekly rate of confirmed cases increases in

New York. The results also show a significant negative effect of risk perception on consumers' spending on major consumption categories such as accommodation and food services, health care and social assistance, and sporting goods and hobbies. On the other hand, the effect is positive for two categories of consumption: grocery and food stores and arts, entertainment, and recreation.

In the analysis, I first investigate the effect of the weekly growth rate of COVID-19 cases in New York on the perceived risk of COVID-19 in California. I use four measures for risk perception: death, infection, money loss, and job loss. The results show a significant positive relationship between the growth rate of COVID-19 cases in New York and California residents' risk perception for all four measures before the COVID-19 vaccine was publicly available in California. In particular, the  $F$ -statistics associated with the instrument, the weekly growth rate of COVID-19 cases in New York, are well above conventional thresholds. These results give me confidence that I have a strong instrument in the first stage that will help me to identify the causal effect of risk perception on consumption expenditure changes. Accordingly, in the second stage, I use the predicted values of risk perception measures from the first stage to estimate their impact on spending changes in California. I use two-stage least squares (2SLS) estimation and robust standard errors.

The literature on risk perception of a health threat comes from studies of previous pandemics such as the SARS epidemic (de Zwart et al., 2009), the H1N1 influenza pandemic (Rudisill 2013; Poletti et al., 2011), and the Ebola outbreak (Yang and Chu, 2018; Prati and Pietrantoni, 2016). Recently, studies have applied theories of risk perception to the COVID-19 epidemic (Dryhurst et al., 2020; Savadori and Lauriola, 2021). Studies analyzing the relationship between the risk perception of COVID-19 and consumption provide consistent evidence that the saving and spending decisions of consumers are affected by their assessment of the likelihood of infection (Chetty et al., 2020, Guglielminetti et al., 2021, Jin et al., 2021). For instance, Goolsbee and Syverson (2021), using cellular phone records of consumer visits to various businesses, show that legal shut-down orders accounted for only seven percent of the massive decline in consumer visits in the United States during the pandemic. Most of this decline in consumer visits was associated with the reported number of COVID-19 deaths, consistent with hypotheses that fear of infection was the main driver of consumption changes.

Immordino et al. (2022), using a survey of Italian households, find that fear of the virus and income uncertainty reduced the probabilities of consumption and increased saving during the pandemic. Finally, Jin et al. (2021) find that the severity of the pandemic increased the risk perception of individuals and hence their saving (vs. spending) willingness.

Given that there is convincing evidence that risk perception has altered the spending behavior of consumers during the COVID-19 crisis, it is possible that the impact of government policies implemented at the macroeconomic level to stimulate consumption during the pandemic was much smaller than anticipated. It is therefore important to provide further and more comprehensive analysis of the behavioral component of spending changes during the pandemic.

This study has several contributions to the existing literature. First, to the best of my knowledge, this paper is the first that analyzes the causal relationship between risk perception of the coronavirus and spending changes by using an instrumental variable (IV) approach. Identifying this relationship is challenging due to possible endogeneity problems. For example, a standard ordinary least squares (OLS) regression of consumption expenditures on risk perception might ignore confounding variables in the error term, which may be simultaneously correlated with consumer risk perception and spending. For instance, having a family history of common disorders such as heart and kidney diseases may simultaneously affect one's perception of the coronavirus and his consumption expenditures. This paper is the first to address this problem by using the weekly growth rate of COVID-19 cases in a different geographical location as an instrument.

Another contribution of this paper to the existing literature is to provide quantitative evidence of *how much* risk perception affected consumption expenditure changes during the pandemic. Previous studies have only observed whether risk perception changed an individual's spending behavior. This paper, however, demonstrates how much of the change in spending is attributable to risk perception. Lastly, it provides a clearer picture of the role of risk perception on spending changes by looking at its effect on different consumption categories. In particular, this paper presents evidence that the perceived risk of the virus caused individuals to substitute spending on several consumption categories, including health care, for groceries and entertainment goods during the COVID-19 crisis.

The remainder of the paper is organized as follows. Section 2 describes the data. Section 3 details the sample, methodology, and descriptive statistics. Section 4 describes the empirical strategy. Section 5 reports the main results of consumption changes. Finally, Section 6 concludes the paper and provides policy implications.

## 2 Data

This study merges two datasets: (i) The University of Southern California (USC) Center for Economic and Social Research’s Understanding Coronavirus in America Survey, and (ii) The Opportunity Insights (O.I.) Economic Tracker. USC’s Understanding Coronavirus in America Survey is a probability-based online panel data started in March 2020 that includes US residents aged eighteen and older.<sup>2</sup> Most of the panel repeats on a fourteen-day cycle. Respondents are randomly assigned to fourteen survey invitation days to randomize the responses over the survey period. Each respondent has two weeks to complete the paper-based survey questionnaire after the invitation date.<sup>3</sup> Surveys include a core of questions related to COVID-19, such as personal experiences with the coronavirus, subjective COVID-19 risk perceptions, coping behaviors, etc.

The O.I. Economic Tracker provides seasonally-adjusted high frequency and granular-level data on credit and debit card spending, employment, and several other outcomes. The data come from leading private companies, credit card processors to payroll firms, such as Affinity Solutions, Womply, and Burning Glass Technologies. The O.I. team makes the data publicly available by making several modifications to protect the confidentiality of the provider companies and their clients. For instance, the team reports the data values as percentages, where each value represents the change of the mean values in the first four weeks of January 2020 (Chetty et al., 2020). Also, the team provides all data values as 7-day moving averages to smooth out spikes and account for weekly patterns.

---

<sup>2</sup>Respondents are randomly drawn from the universe of US Postal addresses and are provided with a tablet and broadband internet if needed.

<sup>3</sup>The first survey wave is fielded on March 10, 2020, where all respondents receive the survey on the same date. And the first survey was in the field until March 31, 2020. Each survey period is administered on a bi-weekly basis starting after April 1, 2020, where randomization to fourteen survey invitation days start.

To analyze the effect of the pandemic on consumers, I gathered the daily total number of COVID-19 cases from the Centers for Disease Control and Prevention (CDC). CDC provides daily total cases for each state in the U.S. This paper uses the weekly growth rate of total COVID-19 cases in New York from April 1, 2020 to January 2, 2021.<sup>4</sup>

## 2.1 *Consumption expenditures*

The O.I. Economic Tracker collects consumption expenditures from Affinity Solutions Inc. through credit and debit card spending. Affinity Solutions captures approximately 10 percent of total credit and debit card spending in the U.S. (Chetty et al., 2020).

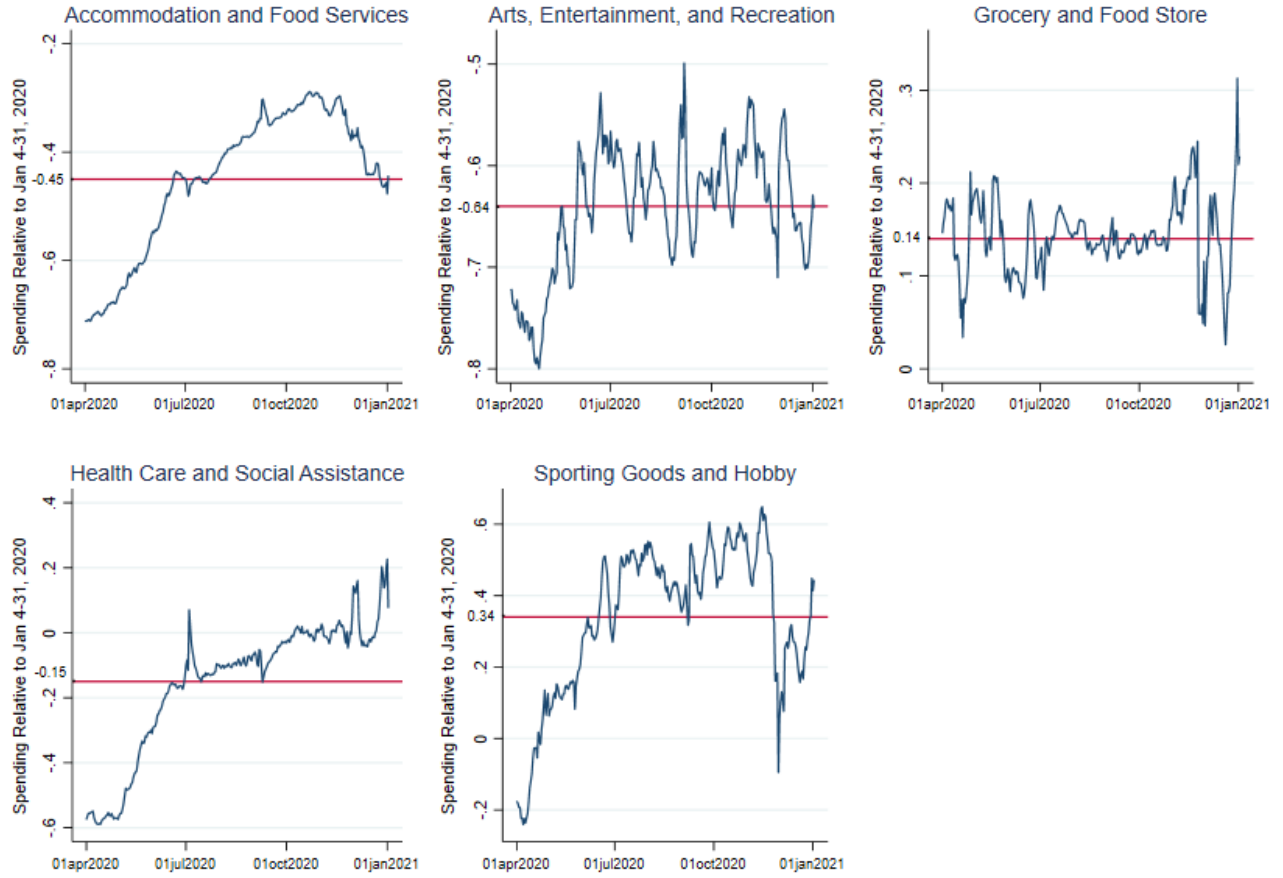
One of the potential concerns with card-based measures of spending is that they might be biased by substitution for cash purchases. To assess the importance of such substitution, the O.I. team examined cash purchases by obtaining cash receipts from CoinOut. This company provides a mobile app where individuals receive rewards by uploading photos of their receipts. The findings show that aggregate fluctuations in card spending and cash spending have similar time trends. In other words, changes in card spending do not appear to be offset by opposite-signed changes in cash spending (Chetty et al., 2020). Therefore, O.I. Economic Tracker provides only card spending data due to larger sample sizes and greater granularity (daily) of such spending.

The data are available for all states and the District of Columbia (D.C.). My sample consists of households residing in California. Therefore, this paper obtains daily estimates of spending changes in California for five different consumption categories: spending on accommodation and food services, spending on arts, entertainment, and recreation, spending on grocery and food stores, spending on health care and social assistance, and spending on sporting goods and hobbies. Figure 1 shows the time trend for each category over the sample period, April 1, 2020 to January 2, 2021.

---

<sup>4</sup>I use the daily values to construct a daily series of the weekly growth rate of the COVID-19 cases. Specifically, I take the average of the current day and the previous six days of COVID-19 cases to smooth any spikes that may arise due to the daily reporting of COVID-19 cases.

Figure 1: Changes in Credit and Debit Card Spending, CA



Note: Average values are marked for each spending category.

## 2.2 GPS measures

The O.I. Economic Tracker obtains GPS mobility records from Google COVID-19 Community Mobility Reports. Google provides mobility estimates for each state based on data from individuals who enable the Location History setting. The GPS measures indicate percentage changes on hours spent at different places for each day compared to a baseline value for that day of the week. The baseline is the median value for the corresponding day of the week over the period January 3 to February 6, 2020.

This paper uses daily estimates of GPS mobility changes in California for seven different



categories of location: time spent outside of residential locations,<sup>5</sup> at retail and recreation locations, grocery and pharmacy locations, parks, workplaces, residential locations, and inside transit stations.<sup>6</sup> All data values are reported as 7-day moving averages. Figure 2 shows the time trend for each category over the sample period, April 1, 2020 to January 2, 2021.

### 2.3 *Consumer risk perception of COVID-19*

To quantify the COVID-19 risk perception in California, this paper uses four questions from the USC's Understanding Coronavirus in America Survey: "what is the chance that you will get the coronavirus in the next three months?" "if you do get the coronavirus, what is the percentage chance you will die from it?" "what is the percentage chance that you will lose your job because of the coronavirus within the next three months?" and "what is the percentage chance you will run out of money because of the coronavirus in the next three months?" All the questions use a 0 to 100 visual linear scale. Also, the questions align with measurements used in the literature to assess risk perception during the COVID-19 pandemic. Furthermore, since the O.I. Economic Tracker provides consumption expenditures and several other control variables on a daily basis, the USC's Understanding Coronavirus in America Survey is aggregated at a daily level based on the time respondents completed each survey.<sup>7</sup> Lastly, this paper uses 7-day moving averages of the risk perception measures in the analyses to maintain the integrity between the two datasets. Figure 3 shows how risk perception of death, infection,

---

<sup>5</sup>The difference between an estimate of time spent inside residential locations for each date and waking hours in the day provides an estimate for hours spent outside of residential locations. The O.I. team calculates the estimate of time spent inside the residential locations in two steps. First, mean values of hours spent inside a home (excluding time asleep) in January 2018 are obtained from the American Time Use Survey. Second, the mean values are multiplied by Google's percent change in hours spent at residential locations for each date.

<sup>6</sup>Retail and recreation includes places such as restaurants, cafes, shopping centers, theme parks, museums, libraries, and movie theaters. Grocery and pharmacy includes places such as grocery markets, food warehouses, farmers markets, specialty food shops, drug stores, and pharmacies. Parks includes places such as local parks, national parks, public beaches, marinas, dog parks, plazas, and public gardens. Lastly, transit stations includes public transport hubs such as subway, bus, and train stations.

<sup>7</sup>Since the responses are randomized over the survey period with different survey invitation days, I have a data point for each day from April 1, 2020 to January 2, 2021.

Figure 2: Changes in GPS mobility, CA



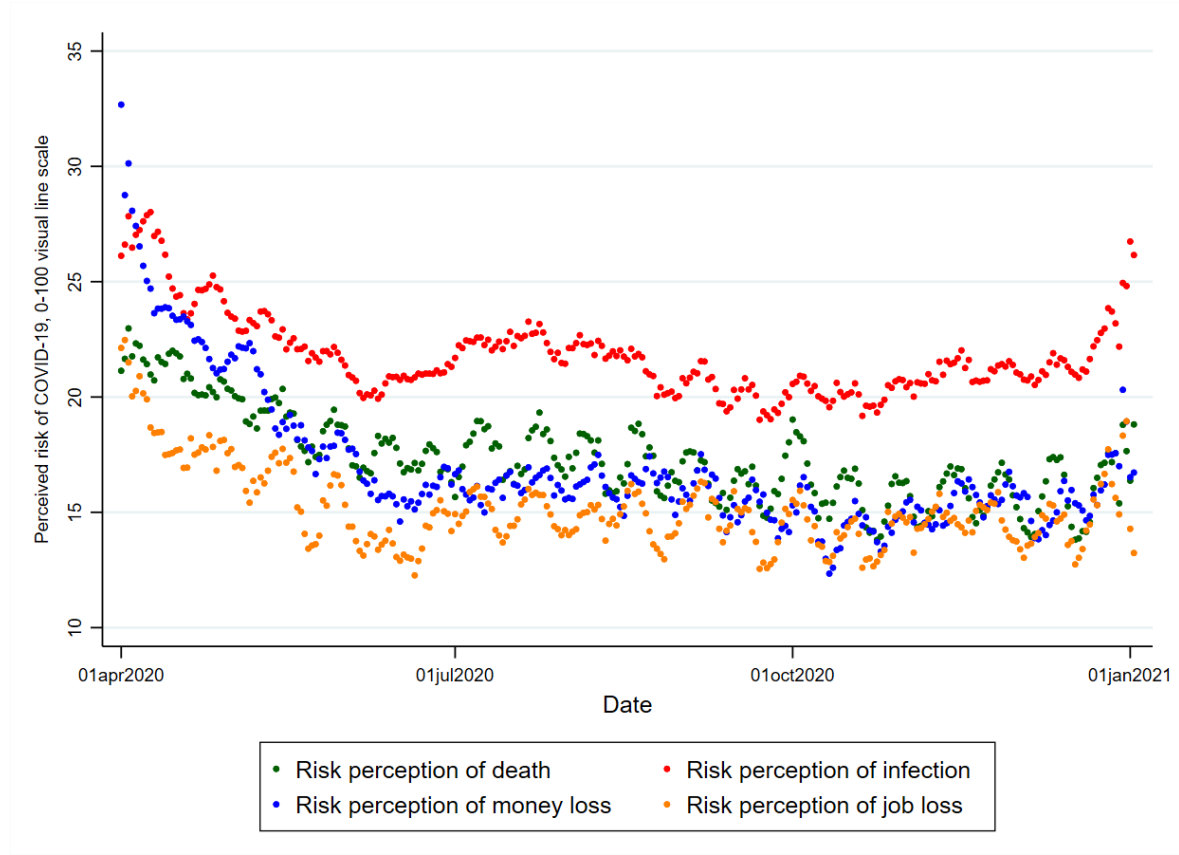
Note: Average values are marked for each GPS mobility category.

money loss, and job loss distributed along time.

## 2.4 Control Variables

I use a wide range of demographic characteristics and some indicator variables from USC's Understanding Coronavirus in America Survey as control variables. Since the survey data are aggregated among respondents at a daily level, the demographic and indicator variables are included as shares of the sample. The demographic characteristics include age, gender, marital status, citizenship status, immigrant status, and income. Specifically, share variables represent the ratio of respondents who have the above characteristics on the relevant survey day to the total number of respondents on the same day. As these variables may affect in-

Figure 3: Risk Perception of COVID-19



dividuals' risk perceptions and willingness to spend, they are used as control variables. For example, using a survey of over 1,500 Americans, Bordala et al. (2020) document a striking finding that perceived health risks associated with COVID-19, such as contracting the virus, being hospitalized, and dying, decline with age. According to the authors, COVID-19 was a "disease and death" shock for young people, which was unexpected and salient. Therefore, this shock inflated COVID-19 and other non-COVID-19-related health risks among youth.

On the other hand, the indicator variables include if an individual has insurance, if the individual is disabled, if the individual is diagnosed with coronavirus, if the individual works or studies from home, if the individual has been placed in isolation or quarantine in the past seven days, and if the individual has sought care from a hospital or a health care facility in the past seven days. Again, the ratio of respondents who have the above characteristics on the relevant survey day to the total number of respondents on the same day is included as a

control. Controlling for these characteristics is important because they may alter individuals' risk perceptions. For instance, direct experience with the virus may change individuals' risk perception (Savadori and Lauriola, 2021). Similarly, the perceived risk of COVID-19 may be lower for people who work from home because they are less likely to go out to meet other people. If the number of respondents who work from home is high on the relevant survey day, they may alter the results. In addition to the above variables, the share of Los Angeles (LA) County residents in the sample is added as a control variable for two main reasons. First, the coronavirus case rates in Los Angeles may differ from other California counties. Figure 4 shows daily COVID-19 case rates for fifteen counties in California with the highest case rates during the pandemic. The graph shows that rates are much higher in Los Angeles than in the other counties, presumably due to demographic differences in this location. Figure 5 maps the geographic location of California counties.

Second, Los Angeles followed different local policy strategies to prevent the spread of the virus. For instance, LA mayor Eric Garcetti enacted a non-essential business closure order earlier than statewide stay-at-home orders.<sup>8</sup> Therefore, controlling for the share of LA residents in the sample is essential to eliminate any variations in individuals' risk perceptions and spending behaviors that may arise from the above differences in Los Angeles.

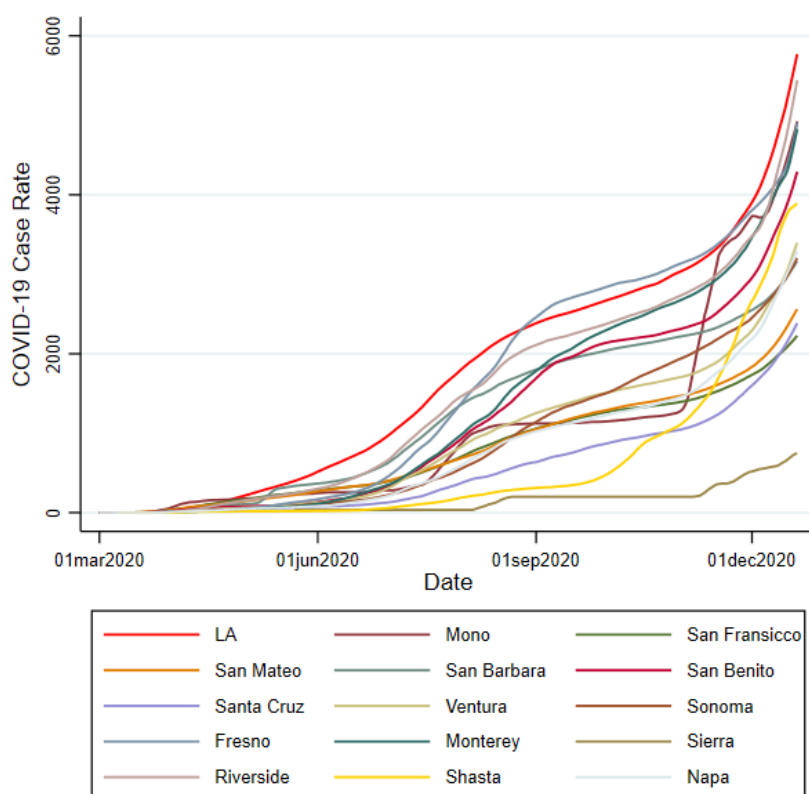
This paper focuses on how changes in consumer spending respond to individuals' subjective judgments of the pandemic and their concerns regarding the future. However, other factors also affected consumer spending during the pandemic. The revenues and employment of small businesses, such as food and accommodation services, changed remarkably. Studies show that the economic impact of the pandemic on entrepreneurship and small businesses was harsh, with many business closures. Therefore, changes in net revenues for small businesses and the number of business closures are obtained from the O.I. Economic Tracker and added as controls.<sup>9</sup> Lack of purchasing power due to unemployment is another reason, but this is thought to be offset by government policies such as unemployment benefits. As the

---

<sup>8</sup>On March 16, 2020, Los Angeles implemented a non-essential business closure order, whereas California's statewide stay-at-home order began on March 19, 2020.

<sup>9</sup>The O.I. Economic Tracker measures small business revenues from Womply through records from credit card transactions for small businesses.

Figure 4: Confirmed COVID-19 Cases Per 100,000 by California County



Note: The COVID-19 case rates are presented as a 7-day moving average.

COVID-19 pandemic brought the U.S. economy to a sudden decline in March 2020, the government enacted the Coronavirus Aid, Relief, and Economic Security (CARES) Act program on March 27, 2020 to help workers impacted by the pandemic. The program included a \$2 trillion coronavirus emergency stimulus package as well as expanded unemployment insurance (UI) benefits, such as the Pandemic Unemployment Assistance (PUA) and the Pandemic Emergency Unemployment Compensation (PEUC). Studies show that CARES Act has played a crucial role in mitigating spending reductions in several industries, including health care (Chetty et al., 2020; Evangelist et al., 2022). Therefore, California's state-level unemployment insurance claims rates<sup>10</sup>, the pandemic unemployment assistance (PUA), and the pandemic

<sup>10</sup>The O.I. Economic Tracker calculates unemployment insurance (UI) claims rates by dividing unemployment claims counts by the Bureau of Labor Statistics labor force estimates from 2019.

Figure 5: California County Map



emergency unemployment compensation (PEUC) claims rates are included as controls along with the consumer price index to observe the actual impact of risk perception on spending changes.<sup>11</sup>

---

<sup>11</sup>PUA and PEUC are funded by the federal government but adopted and administered by the states. See the Appendix C for the details of California's unemployment compensation program administered by the Employment Development Department (EDD).

### 3 Sample, methodology, and descriptive statistics

The sample contains California state residents from April 1, 2020 to January 2, 2021. The sample period consists primarily of 2020 as COVID-19 vaccines became publicly available in California after January 2021. According to San Francisco Chronicle (2020), health care workers in California received their first coronavirus vaccinations on December 14, 2020. The vaccine became available to everyone aged 65 and over after January 13, 2021. And finally, it became available to all adults starting on April 15, 2021. Since this paper uses many questions related to subjective COVID-19 risk perceptions in the analyses, the sample period is limited to 2020 to avoid a potential impact of the vaccines on individuals' risk perception.

There are 36,348 households representing adult residents in California in the survey dataset. The USC's Understanding Coronavirus in America survey randomizes responses over the survey period by assigning individuals a different survey invitation day where they have 14-days to complete the survey. In other words, the data gives a set of randomized responses each day from April 1, 2020 to January 2, 2021. On the other hand, O.I. Economic Tracker provides data at a daily level. Thus, I aggregated the Understanding Coronavirus in America survey at a daily level, based on the time respondents completed each survey, to merge these values with the consumption changes from O.I. Economic Tracker. In addition, I included all responses from the survey data when aggregating the sample at a daily level.<sup>12</sup> As a result, merging two datasets gave me the final sample with a total of 277 observations, i.e., 277 days representing the relation between consumption changes and risk perception. This final sample is used in all the regression analyses in this paper.

Table 1 provides descriptive statistics of the outcome variables, risk perception categories, and control variables. The share variables are included in the regressions on each survey day, representing the percent of respondents with specific characteristics. For example, the mean value of *share of females* indicates that the average ratio of women to men per 277 days (April 1, 2020-Jan 2, 2021) is 60%. The aim of adding the share variables is to control for any differences in responses that may arise from differences in individuals' characteristics.

---

<sup>12</sup>Missing observations because the survey was not fully completed, or the respondent did not know the answer or refused to answer the question were excluded.

Risk perception of infection has the highest sample mean among other risk perception categories. The average risk perception of infection per 277 days is 21.81 out of 100-scale. Similarly, the average risk perception of death, job loss, and money loss due to COVID-19 per 277 days are 17.35, 15.15, and 17, respectively. In other words, people are more concerned about contracting the virus than dying, running out of money, and losing their jobs due to COVID-19 during the sample period. When we look at the spending categories, people, on average, decrease their spending for all the consumption categories except grocery and food stores and arts, entertainment, and recreation. Also, notice that spending on grocery and food stores never goes below 0 during the whole sample period. On the other hand, the GPS mobility categories show that people decrease the amount of time (hours) spent outside of residential locations. Changes in time spent at parks has the highest volatility, presumably due to changing stay-at-home orders during the sample period.

Table 1: Descriptive statistics

Variable	Obs	Mean	Std. Dev.	Min	Max
<b>Outcome Variables</b>					
Spending on grocery and food stores	277	0.14	0.04	0.03	0.31
Spending on arts, entertainment, recreation	277	-0.64	0.06	-0.80	-0.50
Spending on sporting goods and hobby	277	0.34	0.21	-0.24	0.65
Spending on accommodation and food services	277	-0.45	0.13	-0.71	-0.29
Spending on health care and social assistance	277	-0.15	0.20	-0.59	0.23
Time spent away from home	277	-0.16	0.04	-0.28	-0.12
Time spent at grocery and pharmacy	277	-0.10	0.04	-0.23	-0.04
Time spent at retail and recreation	277	-0.33	0.08	-0.55	-0.25
Time spent at parks	277	-0.10	0.16	-0.50	0.16
Time spent at inside transit stations	277	-0.43	0.05	-0.58	-0.36
Time spent at workplaces	277	-0.37	0.05	-0.51	-0.31
Time spent at residential locations	277	0.13	0.03	0.10	0.23
<b>Risk Perceptions</b>					
Risk perception of infection	277	21.81	1.79	19.01	28.02
Risk perception of death	277	17.35	1.94	13.81	22.97
Risk perception of job loss	277	15.15	1.73	12.27	22.47
Risk perception of losing money	277	17.00	3.12	12.34	32.68



**Table 1 continued**

Variable	Obs	Mean	Std. Dev.	Min	Max
<b>Other Controls</b>					
Employment level for all workers	277	-0.15	0.04	-0.25	-0.13
Percent change in net revenue for small businesses	277	-0.31	0.08	-0.55	-0.19
Percent change in small businesses open	277	-0.32	0.04	-0.44	-0.23
Continued claims rate, regular UI	277	11.72	4.40	2.06	24.80
Continued claims rate, PUA	277	11.27	7.73	0.00	36.00
Continued claims rate, PEUC	277	2.89	2.54	0.00	7.12
Consumer price index	277	0.97	0.40	0.24	1.40
Share of females	277	0.60	0.06	0.00	1.00
Share of US citizens	277	0.93	0.04	0.50	1.00
Share of married people	277	0.47	0.07	0.00	1.00
Share of white people	277	0.68	0.08	0.00	0.88
Share of Asian people	277	0.13	0.06	0.00	1.00
Share of LA county residents	277	0.57	0.09	0.00	0.67
Share of disabled people	277	0.05	0.02	0.00	0.13
Medicaid people share	277	0.08	0.07	0.00	1.00
Medicare people share	277	0.23	0.08	0.00	1.00
Share of people who have health insurance	277	0.89	0.05	0.50	1.00
Age (mean)	277	47.47	1.94	36.00	52.50
Age squared (mean)	277	2523.91	195.52	1296.00	3006.76
Share of first-generation immigrants	277	0.23	0.08	0.00	1.00
Share of people diagnosed with COVID-19	277	0.01	0.03	0.00	0.50
Share of people seeking care from a health facility	277	0.07	0.07	0.00	1.00
Share of people who works/studies from home	277	0.56	0.08	0.00	1.00
Share of people placed in isolation/quarantine	277	0.05	0.04	0.00	0.50
Share of income less than \$5,000	277	0.05	0.02	0.00	0.18
Share of income \$5,000 - \$7,499	277	0.02	0.01	0.00	0.11
Share of income \$7,500 - \$9,999	277	0.02	0.01	0.00	0.10
Share of income \$10,000 - \$12,499	277	0.03	0.01	0.00	0.11
Share of income \$12,500 - \$14,999	277	0.02	0.02	0.00	0.15
Share of income \$15,000 - \$19,999	277	0.03	0.03	0.00	0.50
Share of income \$20,000 - \$24,999	277	0.04	0.03	0.00	0.50
Share of income \$25,000 - \$29,999	277	0.04	0.02	0.00	0.12

**Table 1 continued**

Variable	Obs	Mean	Std. Dev.	Min	Max
Share of income \$30,000 - \$34,999	277	0.05	0.06	0.00	1.00
Share of income \$35,000 - \$39,999	277	0.05	0.02	0.00	0.18
Share of income \$40,000 - \$49,999	277	0.07	0.04	0.00	0.50
Share of income \$50,000 - \$59,999	277	0.07	0.03	0.00	0.33
Share of income \$60,000 - \$74,999	277	0.09	0.03	0.00	0.31
Share of income \$75,000 - \$99,999	277	0.12	0.04	0.00	0.22
Share of income \$100,000 - \$149,99	277	0.14	0.04	0.00	0.25
Growth rate of COVID-19 cases, NY	277	0.08	0.17	0.01	1.29

Note: Risk perception values are based on responses using a 0 to 100 visual linear scale. Mobility measures show the changes in hours spent compared to the base period (Jan 3-Feb 6). The share control variables do not represent the whole population. They are added in the regressions for each survey day to represent the portion of respondents with the above characteristics. They aim to control for any deviation in individuals' risk perception that may arise from the differences in their characteristics. For example, the mean value of *share of females* indicates that the average ratio of women to men per sample day (277 in total) is 60%.

## 4 Empirical strategy and results

To analyze the effect of the perceived risk of COVID-19 on consumption expenditures, I use a two-stage instrumental variable regression (2SLS-IV) framework to control for potential endogeneity issues. Standard ordinary least squares (OLS) regressions yield biased estimates if unobserved factors in the error term correlate with risk perception and consumption expenditures. For example, if a person knows that he has a genetically weak immune system, this might influence his perception of death or infection and consumption. The same reason might also affect one's perceived risk of job loss by making him feel insecure because of the fear that his boss might find out about the situation. Another example that might cause a potential bias is one's personality. For instance, it seems likely that introverted people worry less about the virus than outgoing people, who also potentially have different preferences over different categories of consumption.

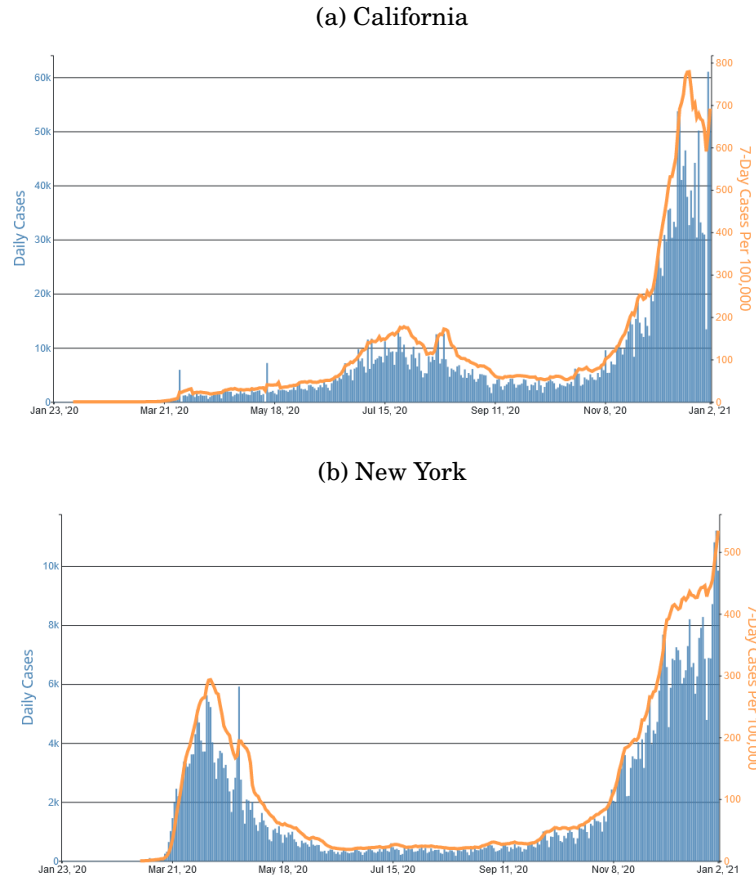
This paper overcomes the potential endogeneity problem by using an instrumental variable approach to identify the causal impact of risk perception on spending. The severity of the

pandemic in the State of New York (NY), as captured in the weekly growth rate of COVID-19 cases ( $\Delta CC_t^{NY}$ ), is used as an instrument for risk perception of COVID-19 in California ( $RP_t$ ) in the first stage along with other control variables ( $X_t$ ). Monthly time-fixed effects ( $\alpha_t$ ) are included in all regressions to control for time-variant shocks that may be related to changes in consumption expenditures ( $\Delta C_t$ ).

To obtain unbiased estimates of the causal impact of risk perception on the consumption expenditure changes in California, the instrument must meet two conditions. First, the estimated covariance between the instrument and risk perception must be non-zero (relevance). In other words, the weekly growth rate of COVID-19 cases in New York must cause variation in California residents' risk perception in the first stage. Second, the instrument must affect consumption expenditures only through the variation it creates in risk perception (exclusion restriction). Under the assumption that mass media plays an important role in shaping individuals' risk perception (Snyder and Rouse, 1995; Bomlitz and Brezis, 2008), this paper assumes that the instrument meets the relevance condition. Various national media outlets and social media platforms had daily reports and updates on the number of COVID-19 cases in New York during the sample period because the coronavirus outbreak started very early and ravaged New York very quickly. According to NBC News, the reported caseload in the state of New York was more than in any country observed by April 10, 2020 (Millman, 2020). Based on this assumption, I assume that the relevance condition is satisfied. Second, the instrument is assumed to satisfy the exclusion restriction. One of the potential violations of the exclusion restriction is the possibility that COVID-19 cases in New York directly affected consumption in California by disrupting freight flows from New York to California. However, there is no compelling evidence that goods transported from New York to California were interrupted during the pandemic. According to the INRIX report (2020), analyzing long-haul freight movements during the pandemic, changes in freight movements across the country reflect imbalances in demand due to stay-at-home orders. The American Transportation Research Institute (2020) also supports the argument that legal shut-down orders were responsible for changing truck activities during the pandemic.

There is also the possibility that COVID-19 cases in New York influenced stay-at-home regulations in California, which, in turn, affected consumption in California. California was

Figure 6: Daily Trends in the Number of COVID-19 Cases Reported to CDC



Note: The blue bars show daily COVID-19 cases. The orange line represents cases in the last 7 days per 100,000 population, allowing for comparisons between areas with different population sizes.

the first state to issue a stay-at-home order on March 19, 2020.<sup>13</sup> On the other hand, New York was one of the earliest states to experience high surges in COVID-19 cases. Figure 6 shows the daily trends in the number of COVID-19 cases in California and New York. Due to the rapid increase in COVID-19 cases in California from February 2 to March 19 (675 in total), the state issued a stay-at-home order to curb the coronavirus. However, Figure 6 shows that COVID-19 cases only started to accelerate in New York *after* the stay-at-home order in California. On this basis, it seems unlikely that the growth rate of COVID-19 cases in New York affect

---

<sup>13</sup>Transportation providers are exempt from state-issued stay-at-home orders as transportation qualifies as an essential business.

California's legal restrictions. Based on the lack of evidence for disruption in freight flows from New York to California and the point that regulations in California were not influenced by COVID-19 cases in New York, the instrument seemingly satisfies the exclusion restriction.

Then, the first stage analysis is based on the following econometric specification:

$$RP_t = \alpha_t + \beta_t \Delta CC_t^{NY} + \gamma_t X_t + u_t \quad (1)$$

where  $u_t$  is a disturbance term. First stage results with alternative controls are shown in Table 2 for each of the four risk perception categories.

Table 2: First Stage Regressions  
Growth rate of COVID-19 Cases and Risk Perceptions

	(1)	(2)	(3)	(4)	(5)
Risk perception of death					
Growth rate of cases	1.930** (0.001)	1.895** (0.002)	1.850** (0.002)	2.817** (0.001)	2.961** (0.001)
Observations	277	277	277	277	277
<i>F</i> -stat.	11.08	9.64	9.54	10.58	11.22
<i>R</i> -squared	0.850	0.851	0.853	0.876	0.877
Adjusted <i>R</i> -squared	0.826	0.826	0.828	0.851	0.851
Risk perception of infection					
Growth rate of cases	3.738*** (0.000)	3.711*** (0.000)	3.687*** (0.000)	4.589*** (0.000)	4.565*** (0.000)
Observations	277	277	277	277	277
<i>F</i> -stat.	36.01	34.54	34.18	43.32	41.33
<i>R</i> -squared	0.894	0.895	0.895	0.922	0.922
Adjusted <i>R</i> -squared	0.877	0.877	0.877	0.906	0.906
Risk perception of money					
Growth rate of cases	8.452*** (0.000)	8.450*** (0.000)	8.445*** (0.000)	12.640*** (0.000)	12.663*** (0.000)
Observations	277	277	277	277	277
<i>F</i> -stat.	176.12	173.19	174.23	193.36	215.13
<i>R</i> -squared	0.926	0.926	0.926	0.954	0.957
Adjusted <i>R</i> -squared	0.914	0.914	0.914	0.944	0.947
Risk perception of job loss					
Growth rate of cases	4.593*** (0.000)	4.542 *** (0.000)	4.514*** (0.000)	5.792*** (0.000)	5.918*** (0.000)

Table 2 continued

	(1)	(2)	(3)	(4)	(5)
Observations	277	277	277	277	277
<i>F</i> -stat.	177.64	152.89	157.94	46.52	49.16
<i>R</i> -squared	0.801	0.804	0.805	0.825	0.826
Adjusted <i>R</i> -squared	0.769	0.772	0.772	0.790	0.789

Note: Column (1) uses only demographics as control variables. Column (2) is the same as column (1) but adds diagnosed share as a control. Column (3) is the same as column (2) but adds clinic share as a control. Column (4) is the same as column (3) but adds local economy controls and the consumer price index. Column (5) is the same as column (4) but adds work home and isolated share as controls. All estimations control for monthly fixed effects. The *F*-statistic tests whether the coefficient on the growth rate of cases is equal to zero. P-values are in parentheses, \*  $p < 0.05$ , \*\*  $p < 0.01$ , \*\*\*  $p < 0.001$

The first stage relationship between the growth rate of COVID-19 cases and the perceived risk of COVID-19 is strongly positive for each risk perception category. Also, the relationship is robust to the inclusion of several different controls including local economy measures and isolated share. The COVID-19 cases in New York are correlated with an individual's perceived risk of the pandemic in California. The observed positive relationship is not surprising due to the significant role of mass media in shaping individuals' risk perception. The Sanderson-Windmeijer (SW) first stage *F*-statistics for weak identification is used to test if the endogenous regressors are weakly identified. The *F*-statistics tests whether the coefficient on the growth rate of cases equal to zero. The magnitude of the statistics document the strength of the instrument. As shown in Table 2, the estimated SW *F*-statistics for the risk perception of death, infection, money loss, and job loss are far beyond the critical values.<sup>14</sup> The reported *F*-statistics indicates that the growth rate of COVID-19 cases is a strong instrument for risk perception. Note that the instrument is weaker for the risk perception of death, suggesting that the instrumental variable estimates for this regressor may be somewhat biased. The estimated first stage *F*-statistics also provides statistical evidence that the instrument satisfies the relevance condition.

The second stage equation estimates the impact of risk perception on the changes in con-

<sup>14</sup>Stock and Yogo (2005) weak ID *F*-test critical values for single endogenous regressor: 10% maximal IV size is 16.38. 15% maximal IV size is 8.96. 20% maximal IV size is 6.66. 25% maximal IV size is 5.53.

sumption expenditures in California:

$$\Delta C_t = \sigma_t + \delta_t \widehat{RP}_t + \theta_t X_t + \zeta_t \quad (2)$$

where  $\zeta_t$  is a disturbance term.

It is challenging to interpret which of the four risk perception measures has a larger impact on spending changes because they are all highly correlated, as shown in Table 3. Therefore, I will not compare the coefficients of risk perception measures (death, infection, money loss, and job loss) to argue about the magnitude of their impact on spending changes.

The following tables report the estimation of Eq. (2) for five major consumption categories: (i) Accommodation and food services, (ii) Arts, entertainment, and recreation, (iii) Grocery and food store, (iv) Health care and social assistance, and (v) Sporting goods and hobbies. The tables and their interpretation are addressed below.

Table 3: Correlation Table

	Death	Infection	Money loss	Job loss
Death	1.0000			
Infection	0.7900	1.0000		
Money loss	0.8243	0.8423	1.0000	
Job loss	0.8004	0.8217	0.8377	1.0000

Note: This table shows the correlation among risk perception of death, infection, money loss, and job loss due to COVID-19.

#### 4.1 Accommodation and food services

Table 4 reports the estimation results for accommodation and food services considering various control variables. The results indicate that all the risk perception measures decreases spending on accommodation and food services. Considering that food and accommodation services require high levels of physical interaction, the negative results of spending changes are reasonable. Individuals reduced their consumption expenditures on restaurants, bars, coffee shops, and hotels, as they became more concerned about the coronavirus.

The coefficient estimates are all highly significant and negative for all the risk perception measures. They also generally increase in magnitude as we control for more local economy

measures. My main specification, the last column, demonstrates that an individual's perception of death risk is responsible for 2.9% of the change in expenditure reductions in accommodation and food services. The effect is 1.9% for the perception of infection risk, 0.7% for money risk, and 1.4% for job loss risk.

Table 4: Second Stage Regressions  
Risk Perceptions and Spending on Accommodation and Food Services

	(1)	(2)	(3)	(4)	(5)
Accommodation and food services					
Risk perception of death	-0.021*** (0.000)	-0.023*** (0.001)	-0.023*** (0.000)	-0.032** (0.001)	-0.029** (0.001)
Risk perception of infection	-0.011*** (0.000)	-0.012*** (0.000)	-0.012*** (0.000)	-0.020*** (0.000)	-0.019*** (0.000)
Risk perception of money	-0.005*** (0.000)	-0.005*** (0.000)	-0.005*** (0.000)	-0.007*** (0.000)	-0.007*** (0.000)
Risk perception of job loss	-0.009*** (0.000)	-0.009*** (0.000)	-0.010*** (0.000)	-0.016*** (0.000)	-0.014*** (0.000)
Observations	277	277	277	277	277
<i>R</i> -squared	0.971	0.971	0.971	0.986	0.987
Adjusted <i>R</i> -squared	0.966	0.967	0.967	0.984	0.984
Monthly fixed effects	Y	Y	Y	Y	Y
Demographic controls	Y	Y	Y	Y	Y
Diagnosed share		Y	Y	Y	Y
Clinic share			Y	Y	Y
Local economy controls and CPI				Y	Y
Work home and isolated share					Y

Note: The columns show percentage changes in the relevant consumption categories. Significance levels: \*  $p < 0.05$ , \*\*  $p < 0.01$ , \*\*\*  $p < 0.001$

## 4.2 Arts, entertainment, and recreation

Table 5 shows the estimation results for arts, entertainment, and recreation. The coefficient estimates are significant and positive for all the risk perception measures. Also, the coefficient



estimates again generally increase as we add more control variables.

The positive impact of the perceived risk of the pandemic on this consumption category is presumably because of the growing digital entertainment industry during the pandemic. According to the Motion Picture Association (MPA) THEME Report (2020), digital streaming subscriptions, for instance, Netflix, Amazon Prime, Hulu, HBO, Twitch, Disney+, increased significantly during the pandemic with the growing number of stay-at-home viewers. Figure 8 in the Appendix D shows that digital revenue in the U.S. increased 33% over the year 2020 (\$26.5 billion) compared to 2019 values. Furthermore, Figure 9 in the Appendix D shows that online video subscriptions increased by 32% in 2020 as more addictive and habit-forming games were introduced. Revenue from online video subscriptions in the U.S. grew by 35% in 2020, totaling \$24.7 billion (MPA Theme report, 2020).

Table 5: Second Stage Regressions  
Risk Perceptions and Spending on Arts, Entertainment, and Recreation

	(1)	(2)	(3)	(4)	(5)
	Arts, entertainment, and recreation				
Risk perception of death	0.021** (0.003)	0.020** (0.004)	0.020** (0.005)	0.021* (0.039)	0.022* (0.034)
Risk perception of infection	0.011*** (0.000)	0.010*** (0.000)	0.010*** (0.000)	0.013* (0.019)	0.014* (0.016)
Risk perception of money	0.005*** (0.000)	0.005*** (0.000)	0.004*** (0.000)	0.005* (0.022)	0.005* (0.017)
Risk perception of job loss	0.009*** (0.000)	0.009*** (0.000)	0.008*** (0.000)	0.010* (0.017)	0.011* (0.014)
Observations	277	277	277	277	277
<i>R</i> -squared	0.707	0.708	0.708	0.762	0.764
Adjusted <i>R</i> -squared	0.660	0.659	0.659	0.714	0.714
Monthly fixed effects	Y	Y	Y	Y	Y
Demographic controls	Y	Y	Y	Y	Y
Diagnosed share		Y	Y	Y	Y
Clinic share			Y	Y	Y
Local economy controls and CPI				Y	Y
Work home and isolated share					Y

Note: The columns show percentage changes in the relevant consumption categories. Significance levels: \*  $p < 0.05$ , \*\*  $p < 0.01$ , \*\*\*  $p < 0.001$

### 4.3 *Grocery and food stores*

Table 6 shows that spending on grocery and food stores increases with all the risk perception categories. As before, the coefficient estimates are robust to the inclusion of several different control variables and tend to increase in size as more controls are introduced. The positive effect of risk perception measures on grocery and food stores is consistent with the psychological studies showing that panic buying is one of the most typical behavior response to the pandemic (Arafat et al., 2020). Individuals cope with the stress and fear of COVID-19 by increasing their purchases of certain products, such as necessities (Jin et al., 2020).

The positive relationship between the perceived risk of the pandemic and spending on grocery and food stores is also consistent with growing online grocery and food delivery services such as Walmart, Whole Foods, DoorDash, and UberEats. In other words, there is a shift from eating at restaurants or cafeterias to picking up groceries curbside or getting them delivered to homes.

Table 6: Second Stage Regressions  
Risk Perceptions and Spending on Grocery and Food Stores

	(1)	(2)	(3)	(4)	(5)
Grocery and food stores					
Risk perception of death	0.035** (0.006)	0.035** (0.005)	0.034** (0.008)	0.055** (0.002)	0.052** (0.001)
Risk perception of infection	0.018*** (0.000)	0.018*** (0.000)	0.017*** (0.000)	0.034*** (0.000)	0.034*** (0.000)
Risk perception of money	0.008** (0.003)	0.008** (0.004)	0.007** (0.005)	0.012*** (0.000)	0.012*** (0.000)
Risk perception of job loss	0.015** (0.002)	0.014** (0.002)	0.014** (0.003)	0.027*** (0.000)	0.026*** (0.000)
Observations	277	277	277	277	277
<i>R</i> -squared	0.365	0.385	0.399	0.457	0.457
Adjusted <i>R</i> -squared	0.263	0.284	0.298	0.348	0.342
Monthly fixed effects	Y	Y	Y	Y	Y
Demographic controls	Y	Y	Y	Y	Y
Diagnosed share		Y	Y	Y	Y
Clinic share			Y	Y	Y
Local economy controls and CPI				Y	Y
Work home and isolated share					Y

Note: The columns show percentage changes in the relevant consumption categories. Significance levels: \*  $p < 0.05$ , \*\*  $p < 0.01$ , \*\*\*  $p < 0.001$

#### 4.4 *Health care and social assistance*

Table 7 shows that spending on health care and social assistance<sup>15</sup> decreases with all the risk perception measures. Notice that the coefficient estimates increase in magnitude and become statistically significant after controlling for local economy measures and the consumer price index. Columns 4 and 5 show that individuals reduce their health care spending relative to pre-pandemic levels as the risk perception of the pandemic increases. The results confirm that controlling for local economy measures and the consumer price index is vital to obtain the pure effect of the risk perception of COVID-19 on health services spending.

The negative effect of the risk perception of COVID-19 and expenditures on health services is because an individual's perception of a hospital turned into danger and fear instead of safe and shelter in the early stages of the pandemic. Hartnett et al. (2020) find that the number of people seeking emergency medical care for reasons other than COVID-19 in the early stages of the pandemic dropped significantly as the number of COVID-19 cases and deaths increased. Similarly, a study from a community hospital in California, Adventist Health Lodi Memorial (LMH), finds that the number of patients presenting to the LMH emergency department dropped significantly after the California shelter-in-place order. Studies also show that the decline in patient visits continued for months after shelter-in-place orders due to fears of contracting the virus (Wong et al., 2020).

---

<sup>15</sup>This category includes several non-essential health care services such as cosmetic dentistry, optical goods, and eyeglasses. It also excludes payments covering health insurance premiums and prescription drugs purchased through retail pharmacies.

Table 7: Second Stage Regressions  
Risk Perceptions and Spending on Health care and Social Assist.

	(1)	(2)	(3)	(4)	(5)
Health care and social assistance					
Risk perception of death	-0.006 (0.370)	-0.006 (0.366)	-0.008 (0.265)	-0.071** (0.002)	-0.068** (0.002)
Risk perception of infection	-0.003 (0.327)	-0.003 (0.312)	-0.004 (0.203)	-0.043*** (0.000)	-0.044*** (0.000)
Risk perception of money	-0.001 (0.314)	-0.001 (0.296)	-0.002 (0.184)	-0.016*** (0.000)	-0.016*** (0.000)
Risk perception of job loss	-0.002 (0.318)	-0.003 (0.303)	-0.003 (0.190)	-0.034*** (0.000)	-0.034*** (0.000)
Observations	277	277	277	277	277
<i>R</i> -squared	0.953	0.954	0.954	0.984	0.984
Adjusted <i>R</i> -squared	0.946	0.946	0.946	0.980	0.980
Monthly fixed effects	Y	Y	Y	Y	Y
Demographic controls	Y	Y	Y	Y	Y
Diagnosed share		Y	Y	Y	Y
Clinic share			Y	Y	Y
Local economy controls and CPI				Y	Y
Work home and isolated share					Y

Note: The columns show percentage changes in the relevant consumption categories. Significance levels: \*  $p < 0.05$ , \*\*  $p < 0.01$ , \*\*\*  $p < 0.001$

## 4.5 *Sporting goods and hobbies*

Table 8 shows that spending on sporting goods and hobbies decreases with all the risk perception measures. All the coefficient estimates are significant and negative. As usual, they increase in magnitude and statistical significance as more controls are included.

There are two possible explanations for the negative relationship between the risk perception of the pandemic and spending on sporting goods and hobbies. First, people avoided crowded places such as gyms, pools, and baseball/softball fields, to limit contact with other individuals. Therefore, personal expenditures in this category declined compared to their pre-pandemic levels. Second, people cut back on unessential expenses as the uncertainty of the pandemic rises and concerns about the pandemic increase. In addition, the results are also consistent with the growing literature on individuals' changing physical activity behavior and habits during the COVID-19 pandemic.

Table 16 in the Appendix B reports coefficients from ordinary least squares (OLS) regressions of the effect of all four risk perception measures on spending changes. To compare the main specification results, the last column in the IV-2SLS regression tables, with the OLS coefficients, I include all the control variables in the OLS regressions: demographics, diagnosed share, clinic share, local economy, the consumer price index, work home, isolated share, and monthly fixed effects. The OLS coefficients are either statistically insignificant or significant but biased downward relative to the estimates using instrumental variables. These results support our concerns that OLS regressions result in unreliable coefficient estimates. Thus, they do not represent the true relationship between the perceived risk of COVID-19 and spending changes.

Table 8: Second Stage Regressions  
Risk Perceptions and Spending on Sporting Goods and Hobbies

	(1)	(2)	(3)	(4)	(5)
Sporting goods and hobbies					
Risk perception of death	-0.154*** (0.000)	-0.159*** (0.000)	-0.168*** (0.000)	-0.104** (0.003)	-0.095** (0.003)
Risk perception of infection	-0.080*** (0.000)	-0.081*** (0.000)	-0.084*** (0.000)	-0.064*** (0.000)	-0.062*** (0.000)
Risk perception of money	-0.035*** (0.000)	-0.036*** (0.000)	-0.037*** (0.000)	-0.023*** (0.000)	-0.022*** (0.000)
Risk perception of job loss	-0.065*** (0.000)	-0.067*** (0.000)	-0.069*** (0.000)	-0.050*** (0.000)	-0.048*** (0.000)
Observations	277	277	277	277	277
<i>R</i> -squared	0.860	0.862	0.867	0.882	0.882
Adjusted <i>R</i> -squared	0.838	0.839	0.844	0.858	0.857
Monthly fixed effects	Y	Y	Y	Y	Y
Demographic controls	Y	Y	Y	Y	Y
Diagnosed share		Y	Y	Y	Y
Clinic share			Y	Y	Y
Local economy controls and CPI				Y	Y
Work home and isolated share					Y

Note: The columns show percentage changes in the relevant consumption categories. Significance levels: \*  $p < 0.05$ , \*\*  $p < 0.01$ , \*\*\*  $p < 0.001$



## 5 Effect of risk perception on GPS mobility records

I follow the same instrumental variable (IV) method to estimate the causal effect of risk perception on changes in hours spent at places such as retail and recreation, grocery and pharmacy, parks, workplaces, residential, and transit stations. The same first stage equation, Eq. (2), is estimated with the same control variables for that purpose. Again, the first stage results show that the weekly growth rate of COVID-19 cases in New York has a positive and statistically significant effect on California residents' perceived risk of COVID-19.

The second stage regression is as follows,

$$\Delta GPS_t = \gamma_t + \phi_t \widehat{RP}_t + \rho_t X_t + \eta_t \quad (3)$$

where  $\eta_t$  is a disturbance term. I use the predicted values of risk perception,  $\widehat{RP}$ , from the estimation of Eq. (1) to fit the above second stage equation. The variable  $\Delta GPS$  corresponds to the main measure of mobility changes through the sample period.

Figure 7 plots the weekly growth rate of COVID-19 cases in New York and changes in mobility records in California. The figure provides some evidence that the growth rate of COVID-19 cases in New York tracks changes in hours spent at parks, workplaces, transit stations, and residential places, although not perfectly.

The tables below reports the estimation of Eq. (3) for six place categories: (i) Retail and recreation, (ii) Grocery and Pharmacy, (iii) Parks, (iv) Workplaces, (v) Residential, and (vi) Transit stations. Overall, the perceived risk of COVID-19 has a statistically significant and negative impact on hours spent at parks, workplaces, and transit stations. In contrast, the effect is statistically significant and positive for residential places. My main specification, the last columns of the tables, indicates that the perceived risk of COVID-19 increases time spent at residential places by 0.7 percentage points, on average. Conversely, the average negative impact of risk perception on time spent at parks, workplaces, and transit stations is 3, 1.1, and 0.8 percentage points, respectively. On the other hand, the results show a statistically insignificant effect of risk perception of COVID-19 on time spent at retail and recreation places-after controlling for local economy measures-and grocery and pharmacy locations.

Figure 7: GPS Mobility changes in CA by Growth Rate of COVID-19 Cases in NY

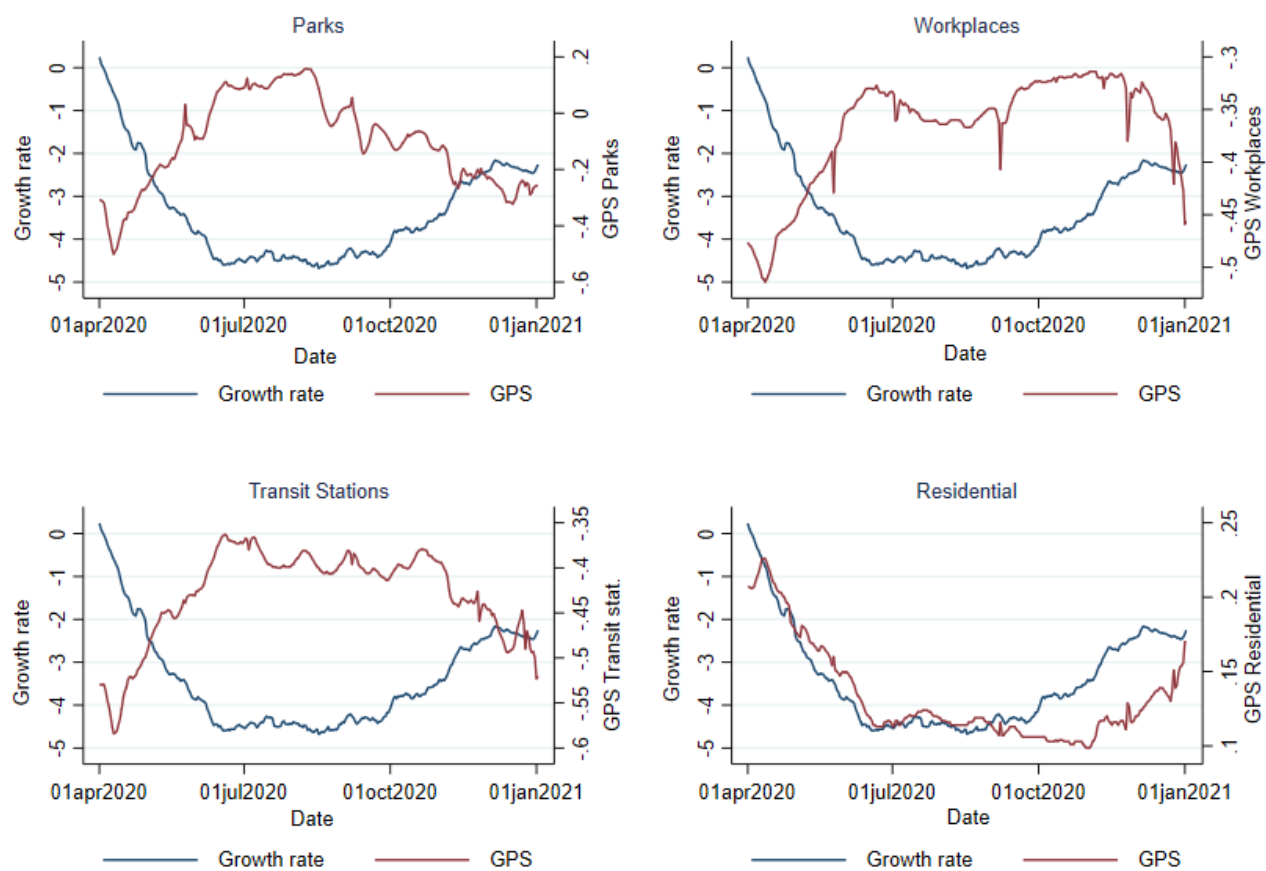


Table 9: Second Stage Regressions  
Risk Perceptions and GPS Retail and Recreation Locations

	(1)	(2)	(3)	(4)	(5)
	GPS retail and recreation locations				
Risk perception of death	0.056*** (0.000)	0.057*** (0.000)	0.058*** (0.000)	0.001 (0.908)	0.001 (0.910)
Risk perception of infection	0.029*** (0.000)	0.029*** (0.000)	0.029*** (0.000)	0.000 (0.908)	0.000 (0.910)
Risk perception of money	0.013*** (0.000)	0.013*** (0.000)	0.013*** (0.000)	0.000 (0.909)	0.000 (0.911)
Risk perception of job loss	0.023*** (0.000)	0.024*** (0.000)	0.024*** (0.000)	0.000 (0.909)	0.000 (0.911)
Observations	277	277	277	277	277
<i>R</i> -squared	0.950	0.950	0.950	0.977	0.977
Adjusted <i>R</i> -squared	0.942	0.942	0.942	0.972	0.972
Monthly fixed effects	Y	Y	Y	Y	Y
Demographic controls	Y	Y	Y	Y	Y
Diagnosed share		Y	Y	Y	Y
Clinic share			Y	Y	Y
Local economy controls and CPI				Y	Y
Work home and isolated share					Y

Note: The columns show percentage changes (relative to Jan 3-Feb 6, 2020 baseline values) in hours spent in retail and recreation places such as restaurants, cafes, shopping centers, theme parks, museums, libraries, and movie theaters. Significance levels: \*  $p < 0.05$ , \*\*  $p < 0.01$ , \*\*\*  $p < 0.001$

Table 10: Second Stage Regressions  
Risk Perceptions and GPS Grocery and Pharmacy Locations

	(1)	(2)	(3)	(4)	(5)
	GPS grocery and pharmacy locations				
Risk perception of death	-0.006 (0.288)	-0.006 (0.310)	-0.005 (0.369)	-0.008 (0.205)	-0.007 (0.282)
Risk perception of infection	-0.003 (0.292)	-0.003 (0.313)	-0.003 (0.373)	-0.005 (0.200)	-0.004 (0.282)
Risk perception of money	-0.001 (0.310)	-0.001 (0.331)	-0.001 (0.388)	-0.002 (0.176)	-0.002 (0.263)
Risk perception of job loss	-0.002 (0.315)	-0.002 (0.337)	-0.002 (0.394)	-0.004 (0.185)	-0.003 (0.271)
Observations	277	277	277	277	277
<i>R</i> -squared	0.827	0.828	0.830	0.873	0.874
Adjusted <i>R</i> -squared	0.800	0.800	0.801	0.847	0.847
Monthly fixed effects	Y	Y	Y	Y	Y
Demographic controls	Y	Y	Y	Y	Y
Diagnosed share		Y	Y	Y	Y
Clinic share			Y	Y	Y
Local economy controls and CPI				Y	Y
Work home and isolated share					Y

Note: The columns show percentage changes (relative to Jan 3-Feb 6, 2020 baseline values) hours spent in grocery and pharmacy places such as grocery markets, food warehouses, farmers markets, specialty food shops, drug stores, and pharmacies. Significance levels: \*  $p < 0.05$ , \*\*  $p < 0.01$ , \*\*\*  $p < 0.001$

Table 11: Second Stage Regressions  
Risk Perceptions and GPS Parks

	(1)	(2)	(3)	(4)	(5)
	GPS parks				
Risk perception of death	-0.025 (0.161)	-0.026 (0.172)	-0.027 (0.156)	-0.056** (0.003)	-0.051** (0.003)
Risk perception of infection	-0.013 (0.158)	-0.013 (0.164)	-0.013 (0.153)	-0.035*** (0.000)	-0.033*** (0.000)
Risk perception of money	-0.006 (0.230)	-0.006 (0.235)	-0.006 (0.226)	-0.013*** (0.000)	-0.012*** (0.000)
Risk perception of job loss	-0.011 (0.223)	-0.011 (0.229)	-0.011 (0.220)	-0.027*** (0.000)	-0.026*** (0.000)
Observations	277	277	277	277	277
<i>R</i> -squared	0.887	0.887	0.887	0.939	0.939
Adjusted <i>R</i> -squared	0.869	0.868	0.868	0.927	0.927
Monthly fixed effects	Y	Y	Y	Y	Y
Demographic controls	Y	Y	Y	Y	Y
Diagnosed share		Y	Y	Y	Y
Clinic share			Y	Y	Y
Local economy controls and CPI				Y	Y
Work home and isolated share					Y

Note: The columns show percentage changes (relative to Jan 3-Feb 6, 2020 baseline values) in hours spent at park places such as local parks, national parks, public beaches, marinas, dog parks, plazas, and public gardens. Significance levels: \*  $p < 0.05$ , \*\*  $p < 0.01$ , \*\*\*  $p < 0.001$

Table 12: Second Stage Regressions  
Risk Perceptions and GPS Workplaces

	(1)	(2)	(3)	(4)	(5)
	GPS workplaces				
Risk perception of death	-0.016*** (0.000)	-0.017*** (0.001)	-0.017*** (0.000)	-0.021** (0.001)	-0.019*** (0.001)
Risk perception of infection	-0.008*** (0.000)	-0.009*** (0.000)	-0.009*** (0.000)	-0.013*** (0.000)	-0.013*** (0.000)
Risk perception of money	-0.004*** (0.001)	-0.004*** (0.001)	-0.004*** (0.001)	-0.005*** (0.000)	-0.005*** (0.000)
Risk perception of job loss	-0.007** (0.001)	-0.007** (0.001)	-0.007** (0.001)	-0.010*** (0.000)	-0.010*** (0.000)
Observations	277	277	277	277	277
<i>R</i> -squared	0.932	0.932	0.932	0.973	0.973
Adjusted <i>R</i> -squared	0.921	0.921	0.921	0.968	0.967
Monthly fixed effects	Y	Y	Y	Y	Y
Demographic controls	Y	Y	Y	Y	Y
Diagnosed share		Y	Y	Y	Y
Clinic share			Y	Y	Y
Local economy controls and CPI				Y	Y
Work home and isolated share					Y

Note: The columns show percentage changes (relative to Jan 3-Feb 6, 2020 baseline values) in hours spent at places of work. Significance levels: \*  $p < 0.05$ , \*\*  $p < 0.01$ , \*\*\*  $p < 0.001$

Table 13: Second Stage Regressions  
Risk Perceptions and GPS Residential Locations

	(1)	(2)	(3)	(4)	(5)
	GPS residential locations				
Risk perception of death	0.009*** (0.001)	0.010** (0.002)	0.010** (0.002)	0.013*** (0.001)	0.012*** (0.001)
Risk perception of infection	0.005*** (0.000)	0.005*** (0.000)	0.005*** (0.000)	0.008*** (0.000)	0.008*** (0.000)
Risk perception of money	0.002** (0.002)	0.002** (0.002)	0.002** (0.002)	0.003*** (0.000)	0.003*** (0.000)
Risk perception of job loss	0.004** (0.002)	0.004** (0.002)	0.004** (0.002)	0.006*** (0.000)	0.006*** (0.000)
Observations	277	277	277	277	277
<i>R</i> -squared	0.951	0.951	0.951	0.984	0.985
Adjusted <i>R</i> -squared	0.943	0.943	0.943	0.981	0.981
Monthly fixed effects	Y	Y	Y	Y	Y
Demographic controls	Y	Y	Y	Y	Y
Diagnosed share		Y	Y	Y	Y
Clinic share			Y	Y	Y
Local economy controls and CPI				Y	Y
Work home and isolated share					Y

Note: The columns show percentage changes (relative to Jan 3-Feb 6, 2020 baseline values) in hours spent at places of residence. Significance levels: \*  $p < 0.05$ , \*\*  $p < 0.01$ , \*\*\*  $p < 0.001$

Table 14: Second Stage Regressions  
Risk Perceptions and GPS Inside Transit Stations

	(1)	(2)	(3)	(4)	(5)
GPS inside transit stations					
Risk perception of death	-0.017** (0.004)	-0.017** (0.007)	-0.017** (0.006)	-0.015** (0.003)	-0.013** (0.003)
Risk perception of infection	-0.009*** (0.001)	-0.009** (0.001)	-0.009** (0.001)	-0.009*** (0.000)	-0.009*** (0.000)
Risk perception of money	-0.004* (0.014)	-0.004* (0.015)	-0.004* (0.015)	-0.003*** (0.000)	-0.003*** (0.000)
Risk perception of job loss	-0.007* (0.012)	-0.007* (0.014)	-0.007* (0.014)	-0.007*** (0.000)	-0.007*** (0.001)
Observations	277	277	277	277	277
<i>R</i> -squared	0.912	0.912	0.912	0.965	0.965
Adjusted <i>R</i> -squared	0.898	0.897	0.897	0.958	0.958
Monthly fixed effects	Y	Y	Y	Y	Y
Demographic controls	Y	Y	Y	Y	Y
Diagnosed share		Y	Y	Y	Y
Clinic share			Y	Y	Y
Local economy controls and CPI				Y	Y
Work home and isolated share					Y

Note: The columns show percentage changes (relative to Jan 3-Feb 6, 2020 baseline values) in hours spent at transit stations such as public transport hubs such as subway, bus, and train stations. Significance levels: \*  $p < 0.05$ , \*\*  $p < 0.01$ , \*\*\*  $p < 0.001$



## 6 Conclusion and policy implications

This paper uses data from USC Center for Economic and Social Research’s Understanding Coronavirus in America Survey to quantify the perceived risk of COVID-19 by focusing on four risk perception categories; death, infection, money, and job loss. The aim is to analyze the impact of risk perception on changes in California residents’ consumption expenditures during the early stages of the pandemic. To this end, data on different categories of spending changes are obtained from Opportunity Insights Economic Tracker. Merging two datasets and using the weekly growth rate of COVID-19 cases in New York as a source of exogenous variation in consumer risk perception in California, I show that individuals’ perceived risk of the coronavirus has a significant causal impact on the expenditure changes in California during the pandemic. The impact is negative for three consumption categories: accommodation and food services, health care and social assistance, and sporting goods and hobbies. On average, risk perception of COVID-19 reduces spending changes in accommodation and food services by 1.7 percentage points. The average reduction is 4 percentage points for health care and social assistance and 5.7 percentage points for sporting goods and hobbies. In contrast, the perceived risk of COVID-19 has a statistically significant and positive impact on spending changes in grocery and food stores and arts, entertainment, and recreation. On average, risk perception increases spending changes by 3.1 and 1.3 percentage points for grocery and food stores and arts, entertainment, and recreation, respectively.

The analysis in this paper is relevant since the government’s policy responses to public health emergencies are based on macroeconomic tools aimed at stimulating consumption by providing liquidity to consumers and businesses. However, spending patterns during the COVID-19 recession differ sharply from those observed in previous recessions. For example, during the Great Recession, almost all the reduction in consumption expenditures arose from a reduction in spending on goods, whereas spending on services was almost unchanged (Chetty et al., 2020). However, spending reductions during the COVID-19 pandemic were mostly due to reductions in services that require face-to-face interaction (Alexander and Karger, 2020; Chetty et al.; 2020, Cox et al., 2020). Correspondingly, this paper, analyzing different consumption categories, shows that expenditures on health care, accommodation, and food ser-

vices, which mostly require in-person services, decrease during the pandemic. Moreover, the findings seem to support the hypothesis that the government's supplemental payments compensated the households who lost their jobs during the pandemic. A reduction in wealth or income would lower expenditures on all goods as predicted by their Engel curves. However, since spending changes differ by consumption categories, the government's policy responses aimed at stimulating economy by increasing consumers' purchasing power seem inadequate in reinvigorating the economy during the COVID-19 crisis. This paper shows that uncertain conditions and fear of infection during the COVID-19 crisis also affect consumption expenditures through consumer psychology and behavior channels. Therefore, the government policies during public health emergencies should penetrate consumer psychology to be sufficient. In other words, future policies should better analyze consumers' psychology during health emergencies. For instance, the government can disseminate scientific knowledge of the virus through various media channels to reduce residents' subjective evaluation of external risks. In addition, the government should emphasize that the effect of the pandemic is short-term to comfort the residents and promote economic stability.

# Appendices

## A Reduced-form regressions

Table 15: Reduced-Form Regressions

Growth rate of COVID-19 Cases and Consumption Expenditures

	(1)	(2)	(3)	(4)	(5)
Accommodation and food services					
Growth rate of cases	-0.041*** (0.000)	-0.043*** (0.000)	-0.043*** (0.000)	-0.090*** (0.000)	-0.085*** (0.000)
Observations	277	277	277	277	277
<i>R</i> -squared	0.971	0.971	0.971	0.986	0.987
Adjusted <i>R</i> -squared	0.966	0.967	0.967	0.984	0.984
Arts, entertainment, and recreation					
Growth rate of cases	0.040*** (0.000)	0.039*** (0.000)	0.038*** (0.000)	0.060* (0.033)	0.065* (0.027)
Observations	277	277	277	277	277
<i>R</i> -squared	0.707	0.708	0.708	0.762	0.764
Adjusted <i>R</i> -squared	0.660	0.659	0.659	0.714	0.714
Grocery and food stores					
Growth rate of cases	0.068** (0.002)	0.065** (0.004)	0.063** (0.005)	0.154*** (0.000)	0.155*** (0.000)
Observations	277	277	277	277	277
<i>R</i> -squared	0.365	0.385	0.399	0.457	0.457
Adjusted <i>R</i> -squared	0.263	0.284	0.298	0.348	0.342
Health care and social assistance					
Growth rate of cases	-0.011 (0.348)	-0.012 (0.329)	-0.015 (0.217)	-0.199*** (0.000)	-0.202*** (0.000)
Observations	277	277	277	277	277
<i>R</i> -squared	0.953	0.954	0.954	0.984	0.984
Adjusted <i>R</i> -squared	0.946	0.946	0.946	0.980	0.980
Sporting goods and hobbies					
Growth rate of cases	-0.297*** (0.000)	-0.302*** (0.000)	-0.311*** (0.000)	-0.292*** (0.000)	-0.282*** (0.000)
Observations	277	277	277	277	277
<i>R</i> -squared	0.860	0.862	0.867	0.882	0.882
Adjusted <i>R</i> -squared	0.838	0.839	0.844	0.858	0.857

Note: Column (1) uses only demographics as control variables. Column (2) is the same as column (1) but adds diagnosed share as a control. Column (3) is the same as column (2) but adds clinic share as a control. Column (4) is the same as column (3) but adds local economy controls and the consumer price index. Column (5) is the same as column (4) but adds work home and isolated share as controls. All estimations control for monthly fixed effects. The columns show percentage changes in the relevant consumption categories. P-values are in parentheses,\* p<0.05, \*\* p<0.01, \*\*\* p<0.001

Higher levels of weekly growth rates of COVID-19 cases in New York are associated with significantly less spending in California for three consumption categories in the reduced-form regressions; accommodation and food services, health care and social assistance, and sporting goods and hobbies. Table 15 shows that coefficient estimates are statistically significant, and the changes in reduction get higher in almost all three consumption categories as we add more control variables (regressions from columns 1 to 5). In the case of health care and social assistance, coefficient estimates become statistically significant after controlling for local economy measures and the consumer price index (column 4). On the other hand, the coefficient estimates for arts, entertainment and recreation, and grocery and food stores are statistically significant and positive. The results indicate that higher levels of the weekly growth rate of COVID-19 cases in New York are associated with significantly more spending in California for these two consumption categories. Also, spending changes increase as we add more control variables. That is the first indication that the growth rate of COVID-19 cases in New York impacts spending behaviors in California for various consumption categories.

## B OLS regression tables

The below table shows the OLS regressions between risk perception and spending changes.

Table 16: OLS Regressions  
Risk Perceptions and Spending Changes

Accommodation and food services				
Risk perception of death	-0.005*** (0.000)			
Risk perception of infection		-0.003 (0.192)		
Risk perception of money			-0.004*** (0.000)	
Risk perception of job loss				-0.003* (0.023)
Observations	277	277	277	277
<i>R</i> -squared	0.986	0.985	0.986	0.985
Adjusted <i>R</i> -squared	0.983	0.982	0.983	0.982
Arts, entertainment, and recreation				
Risk perception of death	0.001 (0.605)			
Risk perception of infection		0.009** (0.004)		
Risk perception of money			0.000 (0.853)	
Risk perception of job loss				0.006* (0.012)
Observations	277	277	277	277
<i>R</i> -squared	0.760	0.768	0.760	0.766
Adjusted <i>R</i> -squared	0.710	0.719	0.709	0.716
Grocery and food stores				
Risk perception of death	0.002 (0.567)			
Risk perception of infection		0.016*** (0.000)		
Risk perception of money			0.005* (0.021)	
Risk perception of job loss				0.003 (0.189)
Observations	277	277	277	277
<i>R</i> -squared	0.406	0.453	0.420	0.409
Adjusted <i>R</i> -squared	0.281	0.338	0.298	0.285

**Table 16 continued**

Health care and social assistance				
Risk perception of death	0.002 (0.465)			
Risk perception of infection		-0.003 (0.285)		
Risk perception of money			-0.008*** (0.000)	
Risk perception of job loss				-0.008** (0.001)
Observations	277	277	277	277
<i>R</i> -squared	0.980	0.980	0.982	0.981
Adjusted <i>R</i> -squared	0.976	0.976	0.978	0.977
Sporting goods and hobbies				
Risk perception of death	-0.008 (0.198)			
Risk perception of infection		-0.023** (0.002)		
Risk perception of money			-0.017** (0.002)	
Risk perception of job loss				-0.012* (0.049)
Observations	277	277	277	277
<i>R</i> -squared	0.877	0.880	0.882	0.878
Adjusted <i>R</i> -squared	0.851	0.855	0.857	0.852

Note: The above regressions include demographics, diagnosed share, clinic share, local economy, the consumer price index, work home, and isolated share as controls. All estimations control for monthly fixed effects. The columns show percentage changes in the relevant consumption categories. P-values are in parentheses, \*  $p < 0.05$ , \*\*  $p < 0.01$ , \*\*\*  $p < 0.001$

## **C   Unemployment programs in California under the CARES Act**

### *C.1   Pandemic Unemployment Assistance (PUA)*

Pandemic Unemployment Assistance (PUA) benefits is one of the federal assistance programs designed to provide compensation to unemployed California residents who were not usually eligible for regular unemployment insurance benefits and were out of business or had significantly reduced their services as a direct result of the COVID-19 pandemic. Pandemic unemployment assistance included up to 86 weeks of benefits between February 2, 2020 and September 4, 2021. Individuals who are eligible for PUA benefits include self-employed workers, business owners, independent contractors, individuals with limited work history, individuals who had used all their regular unemployment insurance (UI) benefits and any extended benefits, and lastly, individuals who were serving false statement penalty weeks on their regular UI claim.

### *C.2   Pandemic Emergency Unemployment Compensation (PEUC)*

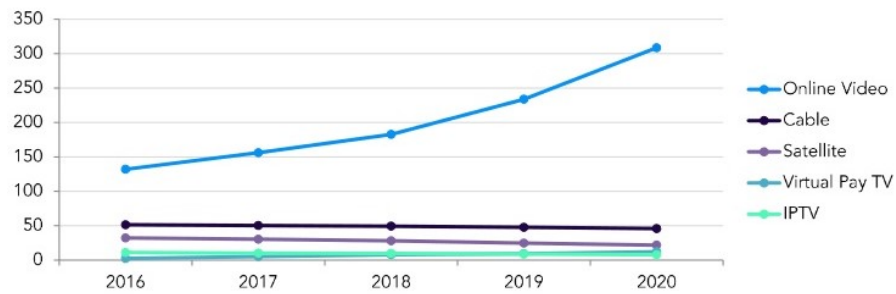
Pandemic Emergency Unemployment Compensation (PEUC) is a federal assistance program that provides an extended benefit period to Californians who have used all of their unemployment benefits. PEUC provides eligible individuals up to 13 weeks of federally funded unemployment compensation between March 29, 2020 and September 4, 2021. California extended this period after September 4, 2021, providing up to 53 additional weeks of compensation payments.

## D Additional tables and figures

Figure 8: U.S. Home and Mobile Entertainment Market (US\$ Billions)



Figure 9: U.S. Pay T.V. and Online Video Subscription (Millions)





## References

- [1] Diane Alexander and Ezra Karger. Do stay-at-home orders cause people to stay at home? effects of stay-at-home orders on consumer behavior. *The Review of Economics and Statistics*, pages 1–25, 2020.
- [2] SM Yasir Arafat, Sujita Kumar Kar, Marthoenis Marthoenis, Pawan Sharma, Ehsanul Hoque Apu, and Russell Kabir. Psychological underpinning of panic buying during pandemic (covid-19). *Psychiatry research*, 289:113061, 2020.
- [3] Scott R Baker, Robert A Farrokhnia, Steffen Meyer, Michaela Pagel, and Constantine Yannelis. How does household spending respond to an epidemic? consumption during the 2020 covid-19 pandemic. *The Review of Asset Pricing Studies*, 10(4):834–862, 2020.
- [4] Bob Pishue, Transportation Analyst, INRIX. Covid-19’s impact on freight: An analysis of long-haul freight movement during a pandemic. Retrieved from: <https://inrix.com/learn/impact-of-coronavirus-on-freight-movement-study/>, 2020. Online; accessed 27 June 2022.
- [5] Larisa J Bomlitz and Mayer Brezis. Misrepresentation of health risks by mass media. *Journal of Public Health*, 30(2):202–204, 2008.
- [6] Pedro Bordalo, Katherine B Coffman, Nicola Gennaioli, and Andrei Shleifer. Older people are less pessimistic about the health risks of covid-19. Technical report, National Bureau of Economic Research, 2020.
- [7] William J Burns and Paul Slovic. Risk perception and behaviors: anticipating and responding to crises. *Risk Analysis*, 2012.
- [8] Raj Chetty, John N Friedman, Nathaniel Hendren, Michael Stepner, et al. The economic impacts of covid-19: Evidence from a new public database built using private sector data. Technical report, national Bureau of economic research, 2020.
- [9] Natalie Cox, Peter Ganong, Pascal Noel, Joseph Vavra, Arlene Wong, Diana Farrell, Fiona Greig, and Erica Deadman. Initial impacts of the pandemic on consumer behavior:

- Evidence from linked income, spending, and savings data. *Brookings Papers on Economic Activity*, 2020(2):35–82, 2020.
- [10] Onno De Zwart, Irene K Veldhuijzen, Gillian Elam, Arja R Aro, Thomas Abraham, George D Bishop, Hélène ACM Voeten, Jan Hendrik Richardus, and Johannes Brug. Perceived threat, risk perception, and efficacy beliefs related to sars and other (emerging) infectious diseases: results of an international survey. *International journal of behavioral medicine*, 16(1):30–40, 2009.
  - [11] Maarten Dossche, Stylianos Zlatanov, et al. Covid-19 and the increase in household savings: precautionary or forced? *Economic Bulletin Boxes*, 6, 2020.
  - [12] Sarah Dryhurst, Claudia R Schneider, John Kerr, Alexandra LJ Freeman, Gabriel Recchia, Anne Marthe Van Der Bles, David Spiegelhalter, and Sander Van Der Linden. Risk perceptions of covid-19 around the world. *Journal of Risk Research*, 23(7-8):994–1006, 2020.
  - [13] Michael Evangelist, Pinghui Wu, and H Luke Shaefer. Emergency unemployment benefits and health care spending during covid. *Health Services Research*, 57(1):15–26, 2022.
  - [14] Diana Farrell, Peter Ganong, Fiona Greig, Max Liebeskind, Pascal Noel, and Joseph Vavra. Consumption effects of unemployment insurance during the covid-19 pandemic. *Available at SSRN 3654274*, 2020.
  - [15] Austan Goolsbee and Chad Syverson. Fear, lockdown, and diversion: Comparing drivers of pandemic economic decline 2020. *Journal of public economics*, 193:104311, 2021.
  - [16] Elisa Guglielminetti and Concetta Rondinelli. Consumption and saving patterns in italy during covid-19. *Bank of Italy Occasional Paper*, (620), 2021.
  - [17] Kathleen P Hartnett, Aaron Kite-Powell, Jourdan DeVies, Michael A Coletta, Tegan K Boehmer, Jennifer Adjemian, Adi V Gundlapalli, et al. Impact of the covid-19 pandemic on emergency department visits—united states, january 1, 2019–may 30, 2020. *Morbidity and Mortality Weekly Report*, 69(23):699, 2020.

- [18] Giovanni Immordino, Tullio Jappelli, Tommaso Oliviero, and Alberto Zazzaro. Fear of covid-19 contagion and consumption: Evidence from a survey of italian households. *Health Economics*, 31(3):496–507, 2022.
- [19] Jennifer Millman. New york has most covid-19 cases in world, deaths top 7k as curve starts to flatten. Retrieved from: <https://www.nbcnewyork.com/news/local/new-york-has-most-covid-19-cases-in-globe-cuomo-warns-of-more-death-even-as-curve-2366721/>, April 10 2020. Online; accessed 29 June 2022.
- [20] Xiaotong Jin, Jianan Li, Wei Song, and Taiyang Zhao. The impact of covid-19 and public health emergencies on consumer purchase of scarce products in china. *Frontiers in public health*, 8:617166, 2020.
- [21] Xiaotong Jin, Yurou Zhao, Wei Song, and Taiyang Zhao. Save for safe: Effect of covid-19 pandemic on consumers’ saving and spending behavior in china. *Frontiers in psychology*, 12:636859, 2021.
- [22] Miles S Kimball. Precautionary saving in the small and in the large. *Econometrica*, 58(1):53–73, 1990.
- [23] Hayne E Leland. Saving and uncertainty: The precautionary demand for saving. *The Quarterly Journal of Economics*, pages 465–473, 1968.
- [24] Ashoka Mody, Franziska Ohnsorge, and Damiano Sandri. Precautionary savings in the great recession. *IMF Economic Review*, 60(1):114–138, 2012.
- [25] Motion Picture Association (MPA). Theme report 2020. Retrieved from: <https://www.motionpictures.org/wp-content/uploads/2021/03/MPA-2020-THEME-Report.pdf>, 2021. Online; accessed 21 June 2022.
- [26] Piero Poletti, Marco Ajelli, and Stefano Merler. The effect of risk perception on the 2009 h1n1 pandemic influenza dynamics. *PloS one*, 6(2):e16460, 2011.

- [27] Gabriele Prati and Luca Pietrantonio. Knowledge, risk perceptions, and xenophobic attitudes: Evidence from Italy during the Ebola outbreak. *Risk Analysis*, 36(10):2000–2010, 2016.
- [28] Caroline Rudisill. How do we handle new health risks? risk perception, optimism, and behaviors regarding the H1N1 virus. *Journal of Risk Research*, 16(8):959–980, 2013.
- [29] Agnar Sandmo. The effect of uncertainty on saving decisions. *The review of economic studies*, 37(3):353–360, 1970.
- [30] Lucia Savadori and Marco Lauriola. Risk perception and protective behaviors during the rise of the COVID-19 outbreak in Italy. *Frontiers in psychology*, page 3822, 2021.
- [31] Leonard J Savage. The theory of statistical decision. *Journal of the American Statistical association*, 46(253):55–67, 1951.
- [32] W Douglass Shaw and Richard T Woodward. Why environmental and resource economists should care about non-expected utility models. *Resource and Energy Economics*, 30(1):66–89, 2008.
- [33] Leslie B Snyder and Ruby A Rouse. The media can have more than an impersonal impact: The case of AIDS risk perceptions and behavior. *Health Communication*, 7(2):125–145, 1995.
- [34] The American Transportation Research Institute (ATRI). Freight activity during COVID-19 pandemic. Retrieved from: <https://truckingresearch.org/2020/04/22/covid-19-impacts-on-the-trucking-industry/>, 2020. Online; accessed 27 June 2022.
- [35] Laura E Wong, Jessica E Hawkins, Simone Langness, Karen L Murrell, Patricia Iris, and Amanda Sammann. Where are all the patients? addressing COVID-19 fear to encourage sick patients to seek emergency care. *Nejm Catalyst*, 1(3):1–12, 2020.
- [36] Janet Z Yang and Haoran Chu. Who is afraid of the Ebola outbreak? the influence of discrete emotions on risk perception. *Journal of Risk Research*, 21(7):834–853, 2018.